

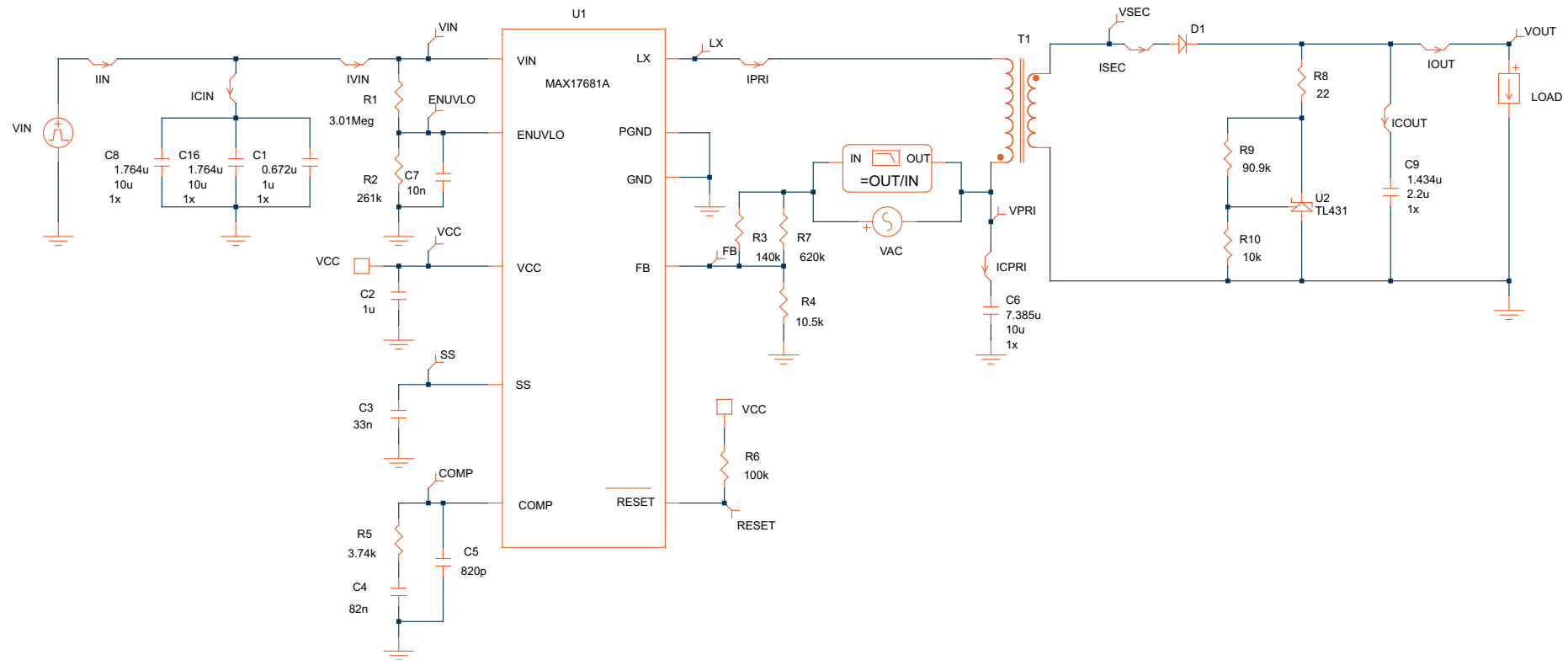
# MAXREFDES1170 MAX17681A

EE-Sim® OASIS Schematic Documentation

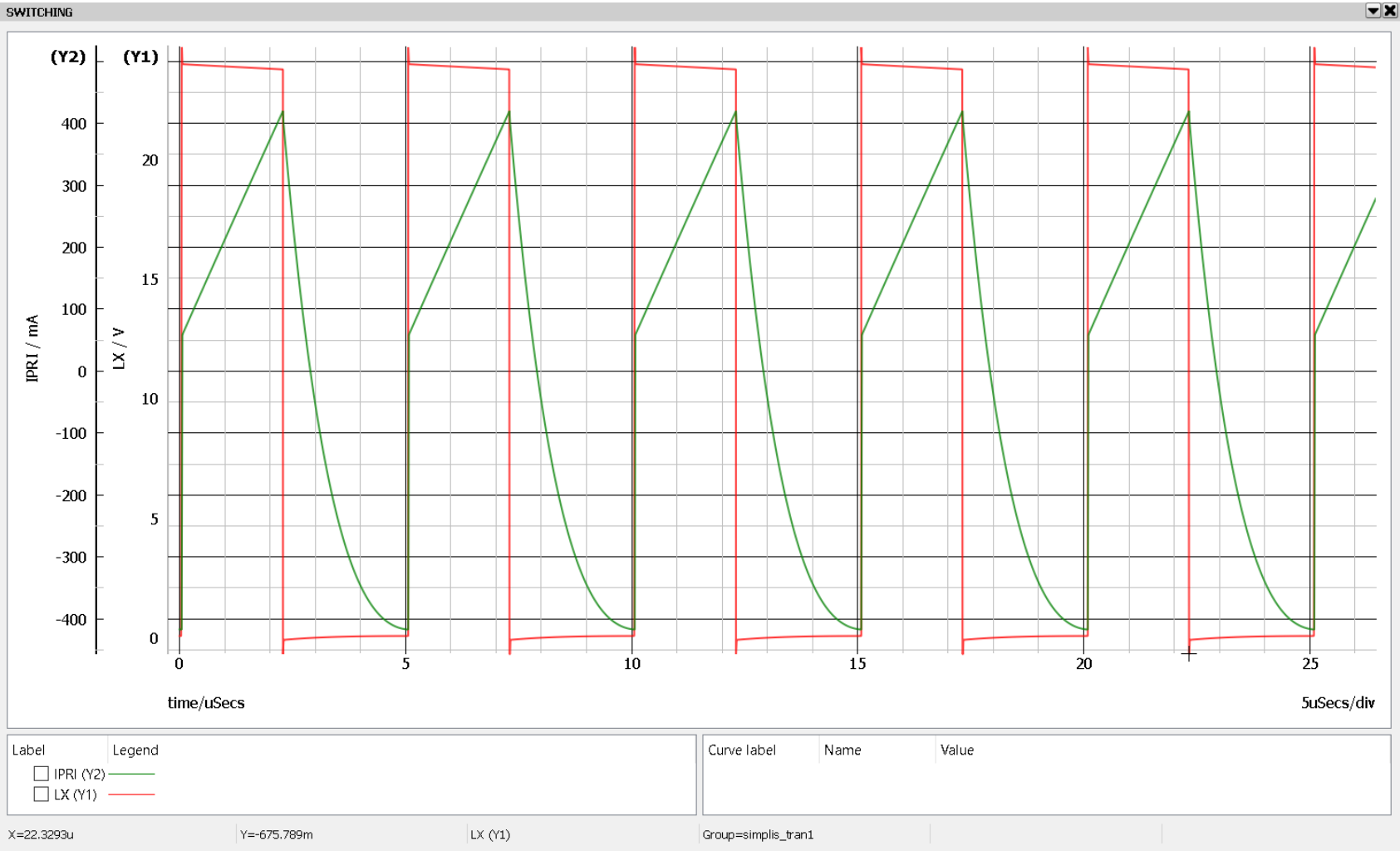
# Design Requirements and Configuration

Primary Specifications	Values	Comments
Part Number:	MAX17681A	
Schematic Name:	MAXREFDES1170	
Mode:	FPWM	
Default Simulation:	POP & AC Loop, Load Step	
Design Requirements:		
Vin(Max):	36V	
Vin(Nom):	24V	
Vin(Min):	17V	
Switching Frequency:	200kHz	
Vout:	24V	
Iout:	0.1A	
Other Key Specs		

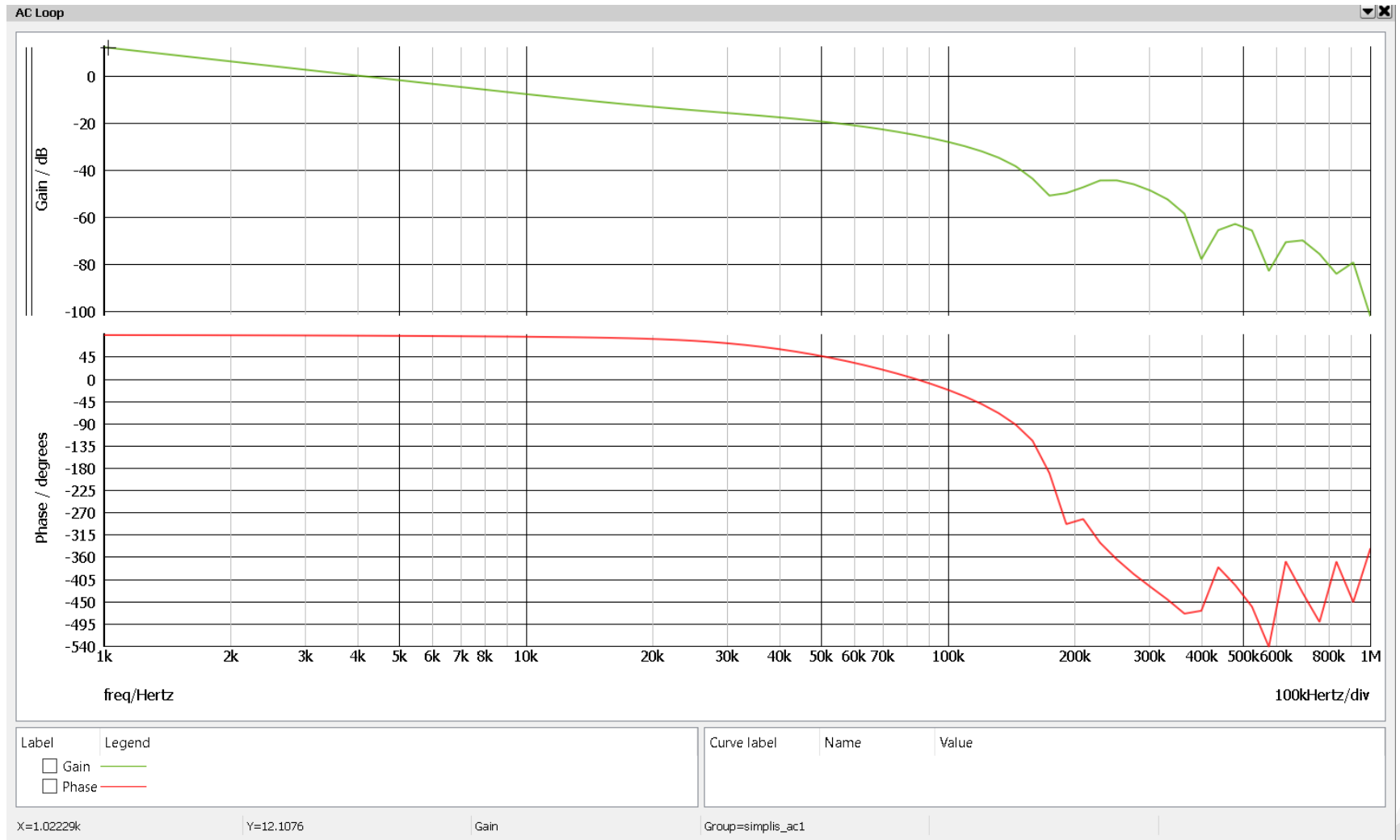
# Schematic



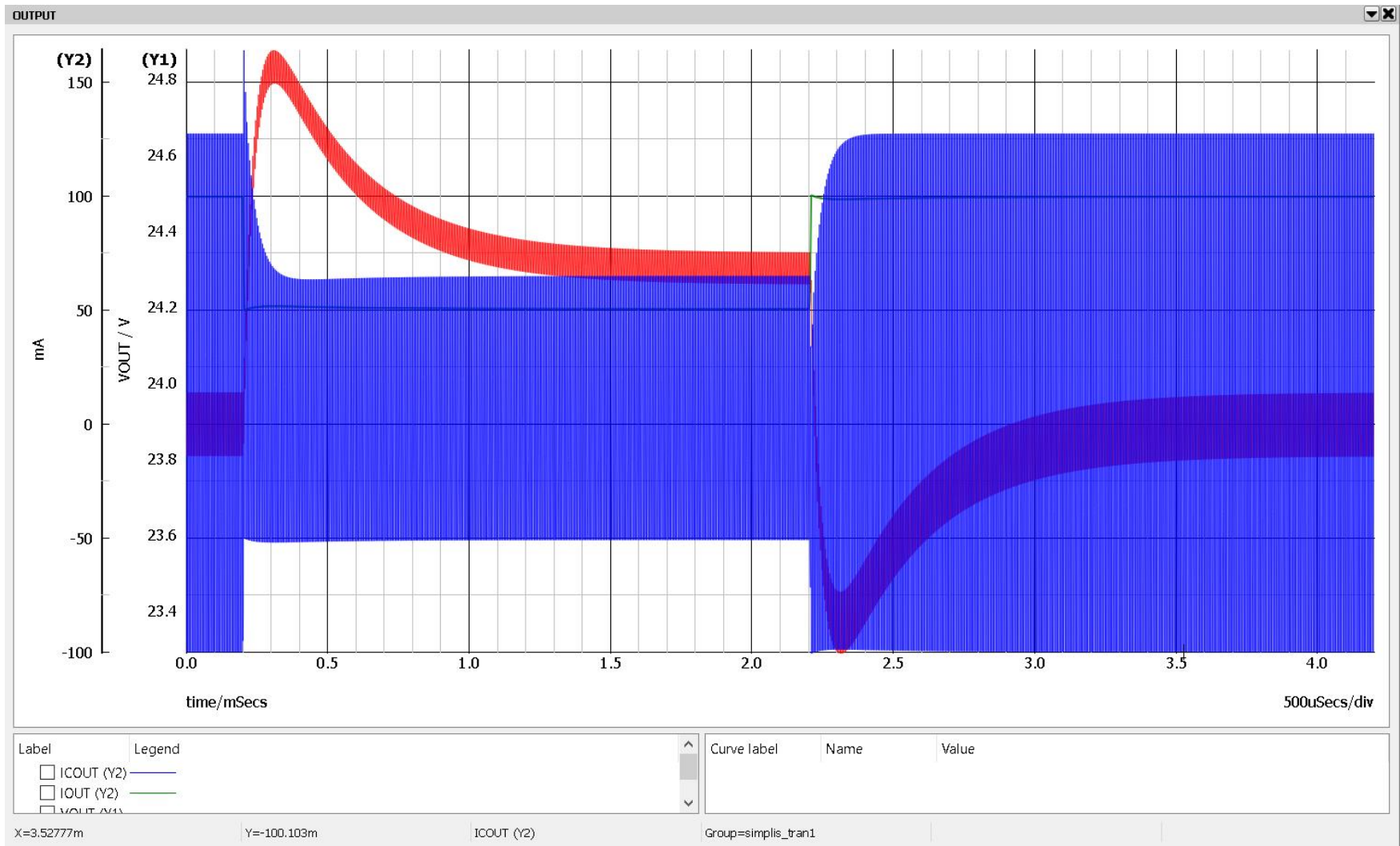
# Switching Waveforms



# Bode Plot



# Load Step Transient Response



# Startup

